



GMT MONTHLY MEMBERSHIP PROGRESS REPORT

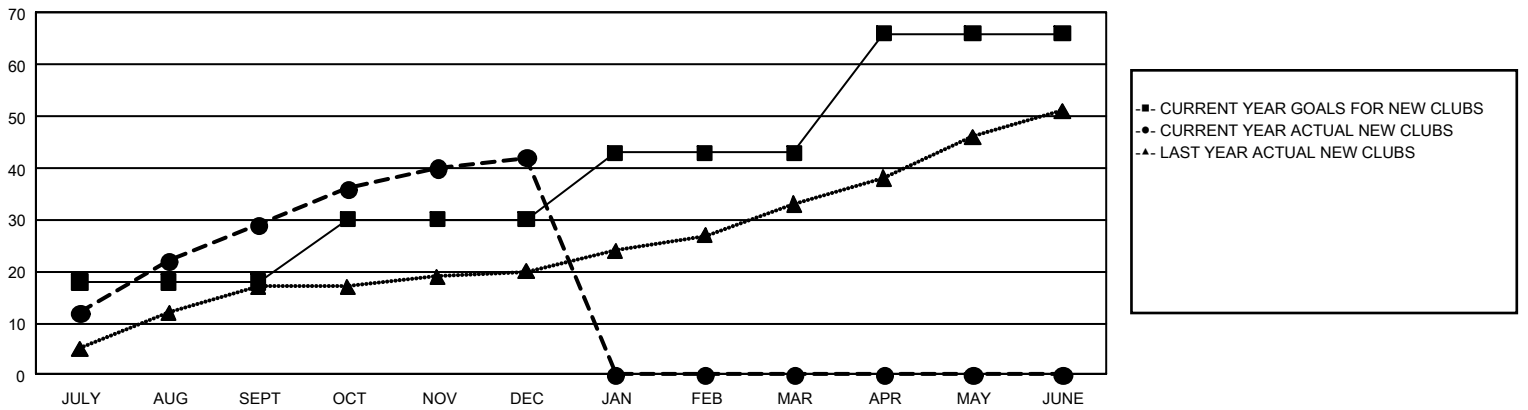
GAT Constitutional Area 7

Results as of: 12/31/2023

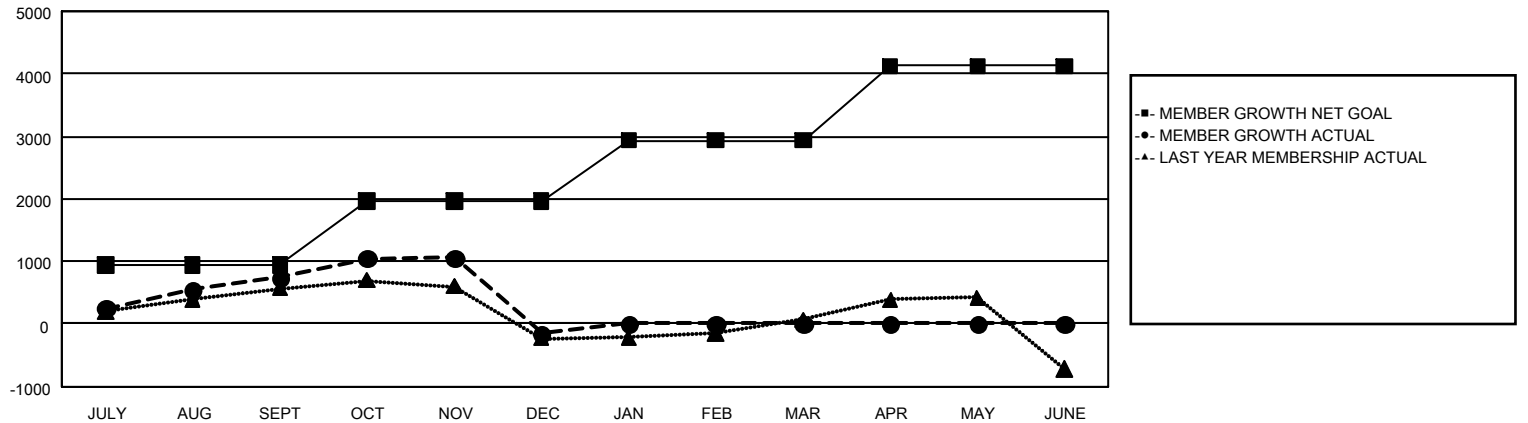
REPORT DOES NOT INCLUDE CLUBS IN UNDISTRICTED AREAS.

Clubs				Members			
RESULTS FOR 2023-2024				RESULTS FOR 2023-2024			
QUARTER	NEW CLUB GOAL	NEW CLUBS	DROPPED CLUBS	QUARTER	MEMBER GROWTH NET GOAL	MEMBER GROWTH ACTUAL	DROPPED MEMBERS ACTUAL (including transfers)
JULY/AUG/SEPT	18	29	21	JULY/AUG/SEPT	937	2,190	1,265
OCT/NOV/DEC	12	13	6	OCT/NOV/DEC	1,029	1,487	2,275
JAN/FEB/MAR	13	0	0	JAN/FEB/MAR	968	0	0
APR/MAY/JUNE	23	0	0	APR/MAY/JUNE	1,194	0	0

GOALS AND ACTUAL NEW CLUBS CUMULATIVE



GOALS AND ACTUAL MEMBERS CUMULATIVE



DROPPED CLUBS: 27	890 CLUBS OF 1,884 ADDED 1 OR MORE NEW MEMBERS	<u>GENDER DISTRIBUTION</u>	
<u>DROPPED MEMBERS</u>		MALE	23,956 (57.02%)
DECEASED	230	FEMALE	18,038 (42.93%)
CLUB CANCELLED	68	TOTAL FAMILY UNIT MEMBERS 7,138	
OTHER	3,241		
TOTAL	3,539		
CLICK HERE FOR CUMULATIVE MEMBERSHIP DATA		TOTAL FAMILY UNIT MEMBERS 7,138	
		FAMILY MEMBERS PAYING HALF DUES 3,819	